



λ | Cortex | GENISYS NVR | 1.5U

NVR SUPPORTS 8/16/24 CHNS WITH BUILT IN PoE



FEATURES HIGHLIGHTS:



ADC Mode

Auto detects IP Cameras without the need to configure. Little IP knowledge required for set up.



IRS Mode

Built in remote servicing. Remotely maintain and service NVR software via Team Viewer. No requirement to attend site.



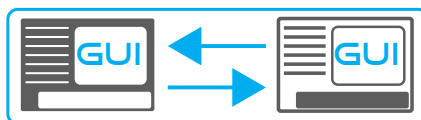
Intelligent Self Maintenance

The system intelligently detects HDD or cameras loss and pro actively notifies the user ensuring system continuity.



Motion Alarms

The NVRs comprehensively detects and notifies of any motion based alarm keeping you up to date as things happen.



Mirrored GUI

Designed with a user friendly local and remote GUI interface. Both GUI's are mirrored offering familiarity and to minimize end user training.



Snapshot

Generated by alarm driven event.



λ | Cortex | GENISYS NVR | 1.5U

NVR SUPPORTS 8/16/24 CHNS WITH BUILT IN PoE

GENISYS FEATURES:

- 5MP IP cameras at 5MP resolution
- Intelligent Self Maintenance
- Time Line Playback
- Snap Shot
- Smart Search
- Dedicated Connectivity Apps for Smartphone/Tablet control
- Motion Alarms/Email Notification
- Mac & PC compatible
- US Designed/UK manufactured
- 8/16/24 Port built in PoE
- Supports 2 x SATA (12Tb Storage)
- 4 x USB Ports
- Video Analytics
- 1 x HDMI & 1 x VGA
- Gigabit Ethernet
- Onvif 2.4 Compliant
- 1.5U Case
- Supports both H.264 and H.265

SPECIFICATION	GENISYS NVR 8/16/24CHN
SYSTEM	
Main Processor	Ultra-high performance microprocessor
Operating System	Linux stability: no viruses, random software updates, etc.
System Resources	Live, recording, playback, motion search, backup, PC and mobile
Control Mode	USB mouse, keyboard optional
Recording Bandwidth (For Plug & Play Port)	256Mbps
INTERFACE	
Video Input	8/16/24 channel 5MP IP cameras
Playback	8/16/24 channel playback
Video Output	1080p HDMI, VGA
Audio Input	1 Channel
Audio Output	1 Channel
Net Interface	Gigabit
USB Interface	Front: 2 x USB 2.0, Back: 1 x USB 3.0 1 x USB 2.0 Internet firmware update
ENVIRONMENTAL	
Power Supply	AC 100~240 V, 50/60 Hz
Power Consumption	Configuration dependent
Working Temperature	0-50C
Working Humidity	10%-90% RH
Atmosphere Pressure	86kpa-106kpa
Dimension	400x412x70mm, 1.5U case



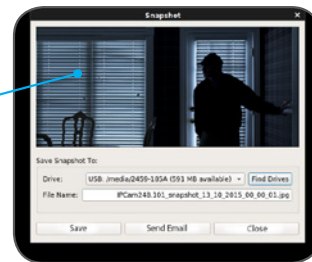
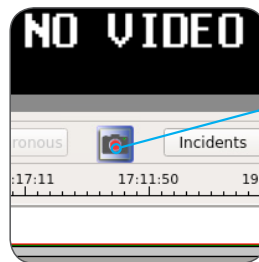
λ | Cortex | GENISYS NVR | 1.5U

NVR SUPPORTS 8/16/24 CHNS WITH BUILT IN PoE

CORTEX SOFTWARE EXPLAINED:

SNAPSHOT SUPPORT:

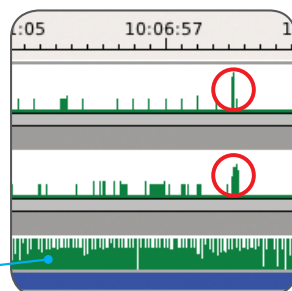
Snapshot generated by Alarm driven event and sent to email of choice.



TIME-LINE



Every camera has an individual time-line that shows any 24 hour period. You can easily determine when events happened or when there is recorded video. Shown in green.



Each green column represents a specific level of motion activity. The tall and numerous columns represent a high level of motion caught by the cameras.

INSTANT PLAYBACK - EASY TO USE, VIEW WITH ONLY 2 CLICKS!

Simply right click on camera tile, select instant playback. Choose your time frame - up to 30mins.

