

DS-2CD2722FWD-IZS

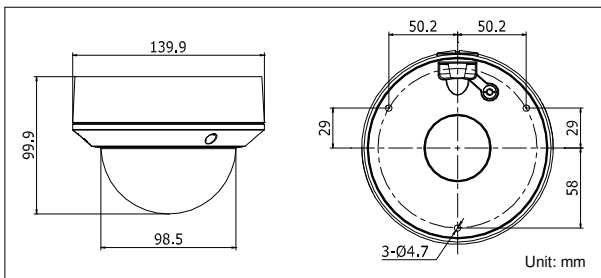
2 MP WDR Dome Network Camera with IR



Key Features

- 2 Megapixel High Resolution
- Full HD1080p Video
- Dual Video Streams
- 2.8 mm to 12 mm Motorized Lens
- 120 dB Wide Dynamic Range
- 3D Digital Noise Reduction
- Smart Features
- PoE 802.3af
- IR Range 30 Meters (~100 feet)
- IP66 and IK10 Protection
- Audio and Alarm Input/Output
- Edge Storage MicroSD Slot, 128 GB

Dimensions



Accessories



Order Model

DS-2CD2722FWD-IZS

Professional Motorised Vandal resistant IP Dome IR Camera

DS-2CD2722FWD-IZS	
Camera	
Image Sensor	1/2.8" progressive scan CMOS
Minimum Illumination	Color: 0.014 lux @ (f/1.4,AGC on); B/W; 0 lux with IR
Shutter Speed	1/3 s to 1/10,000 s
Slow Shutter	Yes
Lens	2.8 mm to 12 mm @ f/1.4, motorized lens
Angle of View	106° to 35°
Lens Mount	Φ14
Day/Night	IR cut filter with auto switch/schedule/triggered by alarm
Digital Noise Reduction	3D DNR
Wide Dynamic Range	120 dB
Pan/Tilt /Rotation	Pan: 0° to 355°, tilt: 0° to 75°, rotation: 0° to 355°
Compression Standards	
Video Compression	H.264+/H.264/MJPEG
H.264 Type	Main Profile
Video Bit Rate	32 Kbps to 16 Mbps
Dual Streams	Yes
Audio	G.711/G.722.1/G.726/MP2L2, 64 Kbps (G.711)/16 Kbps (G.722.1)/16 Kbps (G.726)/32 to 128 Kbps (MP2L2)
Image	
Maximum Resolution	1920 x 1080
Frame Rate	30 fps (1920 × 1080, 1280 × 960, 1280 × 720)
Image Settings	Compression, color, saturation, brightness, contrast, sharpness, rotate mode, privacy mask
Back Light Compensation	Yes, zone configured
Region of Interest (ROI)	Yes
Analytics	
Smart Features	Line crossing detection, intrusion detection
Network	
Network Storage	NAS (supports NFS,SMB/CIFS), ANR
Alarm Triggers	Motion detection, line crossing detection, intrusion detection, tamper alarm, network disconnect, IP address conflict, storage exception
Protocols	TCP/IP, UDP, ICMP, HTTP, HTTPS, FTP, DHCP, DNS, DDNS, RTP, RTSP, RTCP, PPPoE, NTP, UPnP, SMTP, SNMP, IGMP, 802.1X, QoS, IPv6, Bonjour
Security	Three level user authentication, password authorization, HTTPS and SSH certificate, IEEE802.1X, basic and digest authentication, watermark, IP address filtering, log-in lockout
Standards	ONVIF (PROFILE S, PROFILE G), PSIA, CGI, ISAPI
Interface	
Communication	1 RJ-45 10M/100M Ethernet port
On-Board Storage	Built-in microSD/SDHC/SDXC slot, up to 128 GB
Alarm	1 alarm I/O
Audio	1 audio I/O
General	
Operating Conditions	-30° C to 60° C (-22° F to 140° F), humidity 95% or less (non-condensing)
Power	12 VDC ±10%, PoE (802.3af), UL/cUL Listed
Power Consumption	Maximum 5.5 W
IR Range	30 meters (~100 feet)
Ingress Protection	IP66
Impact Protection	IEC60068-275Eh, 20J; EN50102, up to IK10
Dimensions	Φ140 mm × 99.9 mm (Φ5.51" × 3.94")
Weight	1000 g (2.20 lbs)