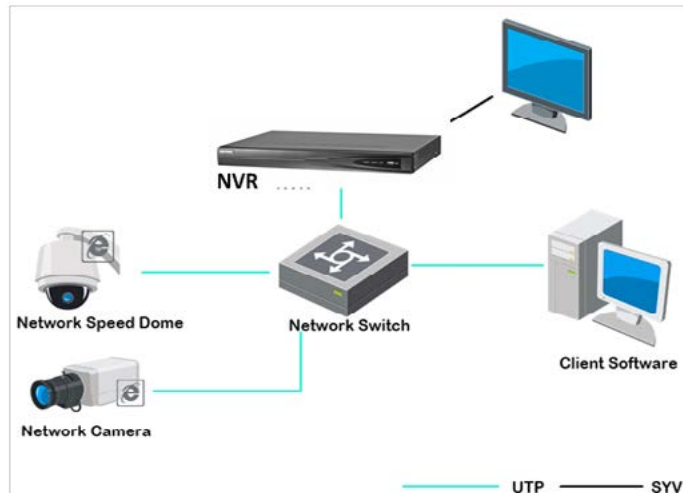


# DS-7608NI-E2/8P

# DS-7616NI-E2/8P

Plug&play embedded NVR



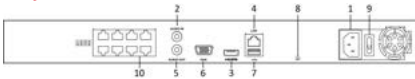
### Key features

- Up to 2 SATA interfaces
- Up to 6Mega IPC recording
- Video output at up to 1080P
- Built-in PoE switch for DS-7600NI-E2/xP

### Available Models

DS-7608NI-E2/8P, DS-7616NI-E2/8P,

### Physical Interfaces



Index	Description
1	Power Supply
2	Audio In
3	HDMI Interface
4	LAN Network Interface
5	Audio Out
6	VGA Interface
7	USB Interface
8	Ground
9	Power Switch
10	Network Interfaces with PoE Function

DS-7608NI-E2/8P

DS-7616NI-E2/8P

Video/Audio input	
IP video input	8-ch
Two-way audio input	1-ch, RCA (2.0 Vp-p, 1kΩ)
Network	
Incoming bandwidth	80Mbps
Outgoing bandwidth	80Mbps
Remote connection	128
Video/Audio output	
Recording resolution	6MP/5MP/3MP/1080P/UXGA/720P/VGA/4CIF/DCIF/2CIF/CIF/QCIF
Frame rate	Main stream: 50 fps (P) / 60 fps (N)
	Sub-stream: 50 fps (P) / 60 fps (N)
HDMI/VGA output	1-ch, resolution: 1920 × 1080 /60Hz, 1600 × 1200 /60Hz, 1280 × 1024 /60Hz, 1280 × 720 /60Hz, 1024 × 768 /60Hz
Audio output	1-ch, RCA (Linear, 1kΩ)
Decoding	
Live view / Playback resolution	6MP/5MP/3MP/1080P/UXGA/720P/VGA/4CIF/DCIF/2CIF/CIF/QCIF
Capability	8-ch@720P, 5-ch@1080P
16-ch@4CIF, 12-ch@720P, 5-ch@1080P	
Hard disk	
SATA	2 SATA interfaces for 2 HDDs
Capacity	Up to 4TB for each disk
Up to 6TB for each disk	
External interface	
Network interface	1 RJ-45 10 /100 /1000 Mbps self-adaptive Ethernet interface
USB interface	1 × USB 2.0 and 1 × USB 3.0
Alarm in/out (Optional)	4 / 1
PoE	
Interface	8 independent 100 Mbps PoE network interfaces
Max. Power	120W
Supported standard	AF and AT
General	
Power supply	100-240V AC
Consumption (without hard disk and PoE)	≤10W
Working temperature	-10 °C - +55 °C (+14 °F~ + 131 °F)
Working humidity	10 % - 90 %
Chassis	19-inch rack-mounted 1U chassis
380 chassis	
Dimensions (W × D × H)	445 × 290 × 45mm (17.5" × 11.4" × 1.8")
380 × 290 × 48mm (15.0" × 11.4" × 1.9")	
Weight (without hard disk)	≤ 1 kg (2.2 lb)